

Flöte in C

Leutershauser Bauern-Dreher

Galopp

trad.

Bearb.: Sebastian Höglauer

♩=148

A

Trpt. spielen *mf*

6 Trpt. spielen *mf*

13 1. Trpt. 2. *f*

B

18

24 Solo *mf* 5 1. *f*

34 2. Solo *mf **C***

41

48 1. 2. **Fine** Trpt. *f*

DC. al Fine
ABCC

Oboe in C

Leutershauser Bauern-Dreher

Galopp

trad.
Bearb.: Sebastian Höglauer

♩=148

A

Trpt. spielen *mf*

6 Trpt. spielen *mf*

13 1. Trpt. 2. *f*

B

18

24 Solo *mf* 5 1. *f*

34 2. Solo *mf **C***

41

48 1. 2. **Fine** Trpt. *f*

DC. al Fine
ABCC

Klarinette in Es

Leutershauser Bauern-Dreher

Galopp

trad.
Bearb.: Sebastian Höglauer

$\text{♩} = 148$

A

Trpt. spielen *mf*

6 Trpt. spielen *mf*

13 1. Trpt. 2. *f*

B

18

24 Solo *mf* 5 1. *f*

C

34 2. Solo *mf*

41

48 1. 2. **Fine** Trpt. *f*

DC. al Fine
ABCC

1. Klarinette in B \flat

Leutershauser Bauern-Dreher

Galopp

trad.
Bearb.: Sebastian Höglauer

$\text{♩} = 148$

Trpt. **A** spielen *mf*

6 Trpt. spielen *mf*

13 1. Trpt. 2. *f*

18 **B**

24 Solo *mf* 5 1. *f*

34 2. Solo **C** *mf*

41

48 1. 2. **Fine** Trpt. *f*

DC. al Fine
ABCC

Fagott in C

Leutershauser Bauern-Dreher

Galopp

trad.
Bearb.: Sebastian Höglauer

♩=148

A

mf

1.

2.

B

f

3

Solo

1.

2.

C

mf-f

immer spielen

1.

2.

Fine

DC. al Fine
ABCC

1. Altsaxophon in Es

Leutershauser Bauern-Dreher

Galopp

trad.
Bearb.: Sebastian Höglauer

♩=148

A

Trpt. spielen *mf*

6 Trpt. spielen *mf*

13 1. Trpt. 2. *f*

18 **B**

24 Es-Klar. Solo Ten. *mf*

30 1. spielen 2. Solo *f* *mf*

35 **C**

43

49 1. 2. **Fine** Trpt. *f*

DC. al Fine
ABCC

2. Altsaxophon in Es

Leutershauser Bauern-Dreher

Galopp

trad.
Bearb.: Sebastian Höglauer

♩=148

A

Trpt. spielen *mf*

6 Trpt. spielen *mf*

13 1. Trpt. 2. *f*

18 **B**

24 Es-Klar. Solo Bar. *mf*

30 1. spielen 2. Solo *f* *mf*

35 **C**

43

49 1. 2. **Fine** Trpt. *f*

DC. al Fine
ABCC

1. Tenorsaxophon in B \flat **Leutershauser Bauern-Dreher**

Galopp

trad.
Bearb.: Sebastian Höglauer

$\text{♩} = 148$

A

Trpt. spielen *mf*

6 Trpt.

12 spielen *mf* 1. 2.

B

18 *f*

23 3

29 Solo 1. 2.

C 1.x Pause *mf-f*

41 immer spielen

47 1. 2. **Fine** Trpt.

DC. al Fine
ABCC

2. Tenorsaxophon in B \flat **Leutershauser Bauern-Dreher**

Galopp

trad.
Bearb.: Sebastian Höglauer

$\text{♩} = 148$

A

mf

1.

B
f

3 Solo

1. 2. **C**
mf-f

immer spielen

1. 2. **Fine**

DC. al Fine
ABCC

Baritonsaxophon in Es **Leutershauser Bauern-Dreher**

Galopp

trad.
Bearb.: Sebastian Höglauer

♩=148

A

mf

1. 2.

B
f

mf

1. 2.

C
mf-f

Fine
DC. al Fine
ABCC

Tenorhorn in B \flat

Leutershauser Bauern-Dreher

Galopp

trad.
Bearb.: Sebastian Höglauer

$\text{♩} = 148$

A

Trpt. spielen *mf*

6 Trpt.

12 spielen *mf* 1. 2.

18 **B** *f*

23 3

29 Solo 1. 2.

35 **C** 1.x Pause *mf-f*

41 immer spielen

47 1. 2. **Fine** Trpt. DC. al Fine ABCC

1. Horn in F

Leutershauser Bauern-Dreher

Galopp

trad.
Bearb.: Sebastian Höglauer

♩=148

A



DC. al Fine
ABCC

2. Horn in F

Leutershauser Bauern-Dreher

Galopp

trad.
Bearb.: Sebastian Höglauer

♩=148

A

mf

1. 2.

B
f

mf

1. 2.

C
mf-f

1. 2. **Fine**

DC. al Fine
ABCC

1. Horn in Es

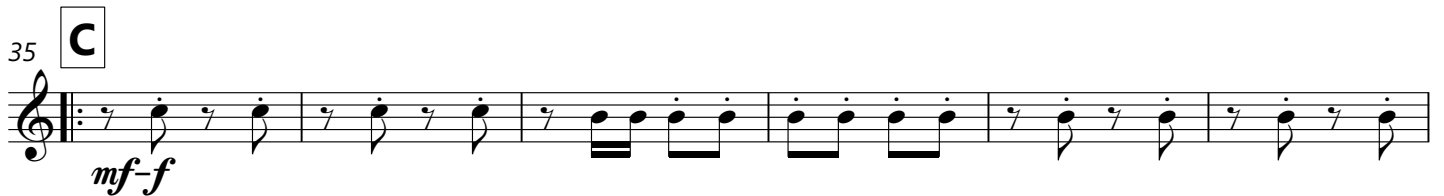
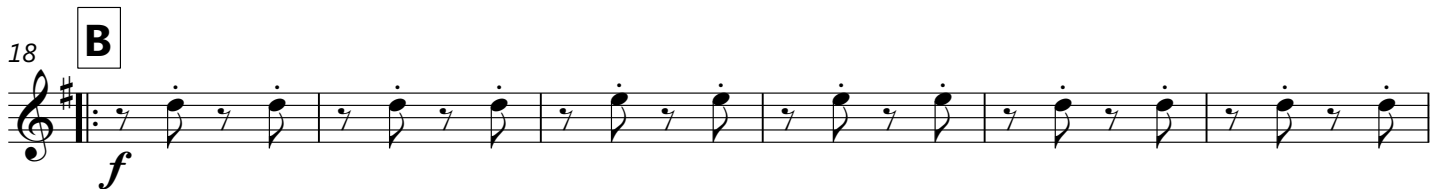
Leutershauser Bauern-Dreher

Galopp

trad.
Bearb.: Sebastian Höglauer

♩=148

A



DC. al Fine
ABCC

2. Horn in Es

Leutershauser Bauern-Dreher

Galopp

trad.
Bearb.: Sebastian Höglauer

♩=148

A



DC. al Fine
ABCC

1. Tuba in C

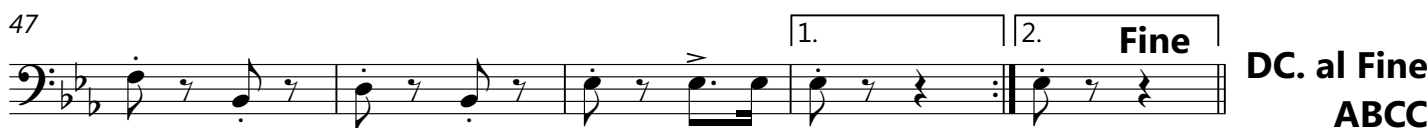
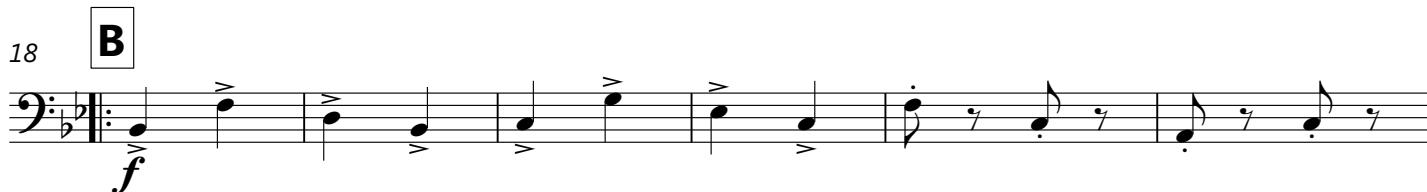
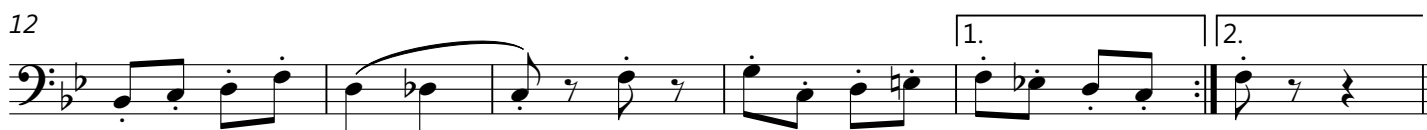
Leutershauser Bauern-Dreher

Galopp

trad.
Bearb.: Sebastian Höglauer

♩=148

A



DC. al Fine
ABCC

2. Tuba in C

Leutershauser Bauern-Dreher

Galopp

trad.
Bearb.: Sebastian Höglauer

♩=148

A

mf

6

12

1. 2.

18 **B**

f

24

mf

30

1. 2.

35 **C**

mf-f

41

47

1. 2. Fine

DC. al Fine
ABCC

1. Tuba in Es

Leutershauser Bauern-Dreher

Galopp

trad.
Bearb.: Sebastian Höglauer

♩=148

A



DC. al Fine
ABCC

2. Tuba in Es

Leutershauser Bauern-Dreher

Galopp

trad.

Bearb.: Sebastian Höglauer

♩=148

A

Musical notation for section A, measures 1-12. The notation is in treble clef with a key signature of one sharp (F#) and a 2/4 time signature. It begins with a repeat sign and a first ending bracket over measures 11 and 12. The dynamic marking *mf* is present at the start.

B

Musical notation for section B, measures 13-24. The notation is in treble clef with a key signature of one sharp (F#) and a 2/4 time signature. It begins with a repeat sign and a first ending bracket over measures 23 and 24. The dynamic marking *f* is present at the start, and *mf* appears later in the section.

C

Musical notation for section C, measures 25-36. The notation is in treble clef with a key signature of one sharp (F#) and a 2/4 time signature. It begins with a repeat sign and a first ending bracket over measures 35 and 36. The dynamic marking *mf-f* is present at the start. The section concludes with the word **Fine**.

DC. al Fine
ABCC

1. Tuba in Bb

Leutershauser Bauern-Dreher

Galopp

trad.

Bearb.: Sebastian Höglauer

♩=148

A

Section A consists of ten measures of music in 2/4 time. It begins with a repeat sign and a dynamic marking of *mf*. The melody features eighth and quarter notes with rests, and includes a first and second ending bracketed at the end.

B

Section B consists of ten measures of music in 2/4 time. It begins with a dynamic marking of *f*. The melody features dotted eighth notes and quarter notes, with a crescendo hairpin and a dynamic marking of *mf* in the fifth measure. It includes a first and second ending bracketed at the end.

C

Section C consists of ten measures of music in 2/4 time. It begins with a dynamic marking of *mf*. The melody features eighth and quarter notes. It includes a first and second ending bracketed at the end, with the word "Fine" written above the second ending.

DC. al Fine
ABCC

2. Tuba in B

Leutershauser Bauern-Dreher

Galopp

trad.
Bearb.: Sebastian Höglauer

♩=148

A

mf

1. 2.

18 **B**

f

mf

1. 2.

35 **C**

mf-f

1. 2. **Fine**

DC. al Fine
ABCC

Bariton in C

Leutershauser Bauern-Dreher

Galopp

trad.
Bearb.: Sebastian Höglauer

♩=148

A

mf

B

f

3 Solo

C

mf-f

immer spielen

Fine

DC. al Fine
ABCC

Bariton in B \flat

Leutershauser Bauern-Dreher

Galopp

trad.
Bearb.: Sebastian Höglauer

$\text{♩} = 148$

A

mf

1.

2.

B

f

3

Solo

1.

2.

C

mf-f

immer spielen

1.

2.

Fine

DC. al Fine
ABCC

1. Trompete in B \flat

Leutershauser Bauern-Dreher

Galopp

trad.
Bearb.: Sebastian Höglauer

$\text{♩} = 148$

A

Solo *f*

3

8

Solo *f*

13

3

1. Solo *f* 2. **B** *f*

20

26

4

1. *p* *f*

34

2. **C** *mf-f*

39

44

49

1. *f* 2. **Fine Solo** *f*

DC. al Fine
ABCC

2. Trompete in B \flat

Leutershauser Bauern-Dreher

Galopp

trad.
Bearb.: Sebastian Höglauer

$\text{♩} = 148$

A

Solo *f*

3

8

Solo *f*

13

3

1. Solo *f* 2. **B** *f*

20

26

4

p 1. *f*

34

2. **C** *mf-f*

39

44

49

1. *f* 2. **Fine Solo** *f*

DC. al Fine
ABCC

1. Posaune in B \flat

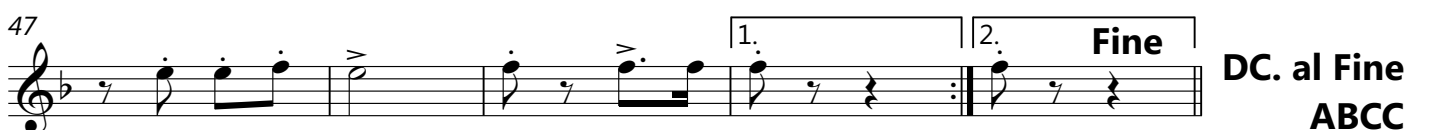
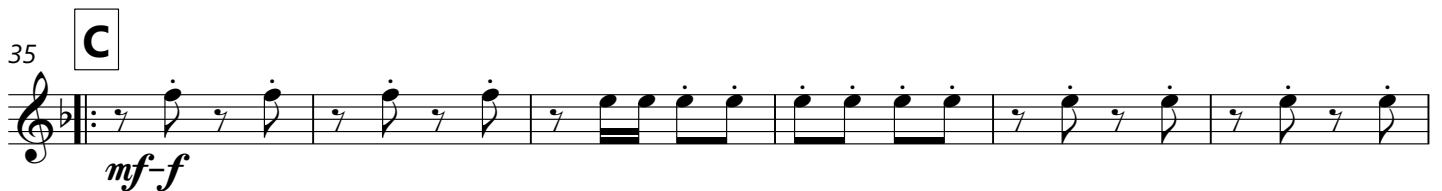
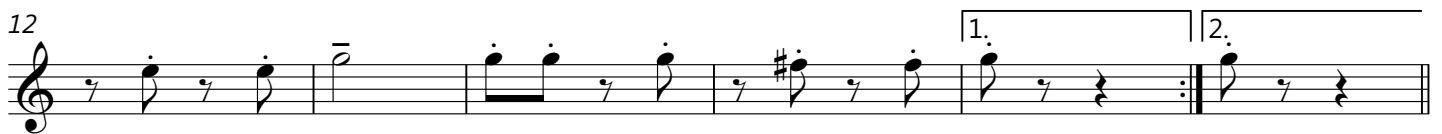
Leutershauser Bauern-Dreher

Galopp

trad.
Bearb.: Sebastian Höglauer

$\text{♩} = 148$

A



DC. al Fine
ABCC

2. Posaune in B \flat

Leutershauser Bauern-Dreher

Galopp

trad.
Bearb.: Sebastian Höglauer

$\text{♩} = 148$

A

mf

6

12

1. 2.

18 **B**

f

24

mf

30

1. 2.

35 **C**

mf-f

41

47

1. 2. **Fine**

DC. al Fine
ABCC

3. Posaune in B \flat

Leutershauser Bauern-Dreher

Galopp

trad.
Bearb.: Sebastian Höglauer

$\text{♩} = 148$

A

mf

6

12

1. | 2.

18

B

f

24

mf

30

1. | 2.

35

C

mf-f

41

47

1. | 2. **Fine**

DC. al Fine
ABCC

1. Posaune in C

Leutershauser Bauern-Dreher

Galopp

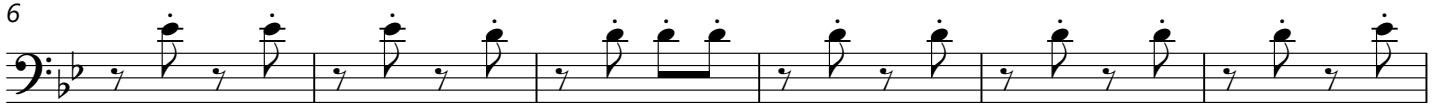
trad.
Bearb.: Sebastian Höglauer

♩=148

A



mf



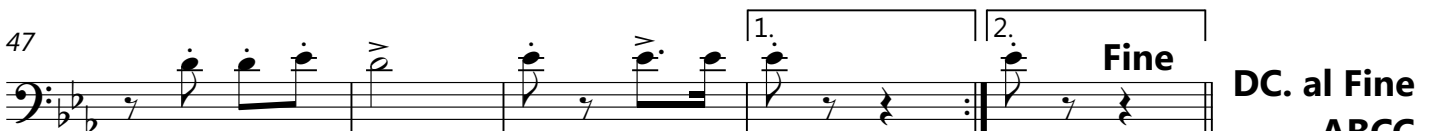
f



mf



mf-f



Fine

DC. al Fine
ABCC

Leutershauser Bauern-Dreher

Galopp

trad.
Bearb.: Sebastian Höglauer

♩=148

A

mf

1. 2.

f

mf

1. 2.

mf-f

1. 2. **Fine**

DC. al Fine
ABCC

Leutershauser Bauern-Dreher

Galopp

trad.
Bearb.: Sebastian Höglauer

♩=148

A

mf

6

12

1. 2.

18

B

f

24

mf

30

1. 2.

35

C

mf-f

41

47

1. 2. Fine

DC. al Fine
ABCC

Leutershauser Bauern-Dreher

Galopp

trad.
Bearb.: Sebastian Höglauer

♩=148

A

mf

4

6

4

13

1.

2.

f

B

2

2

24

mf

2

30

1.

2.

f

C 1.x ohne Becken

mf-f

41

47

1.

2.

f

Fine

DC. al Fine

ABCC