



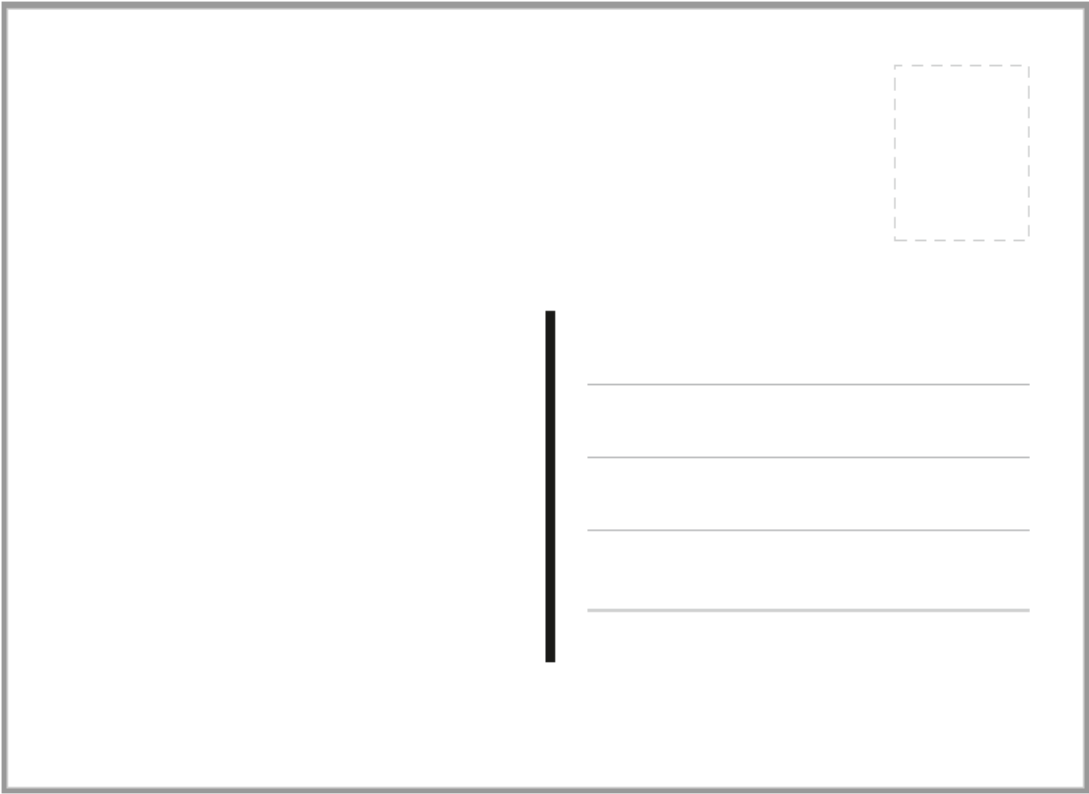
Liedpostkarten

Liedpostkarten sind Postkarten, auf denen neben Noten und Liedtexten auch eine Illustration enthalten ist. Ihren Ursprung fanden sie im Erzgebirge und fast gleichzeitig in Österreich-Ungarn und Bayern. Sie trugen zur Verbreitung von Liedern bei.

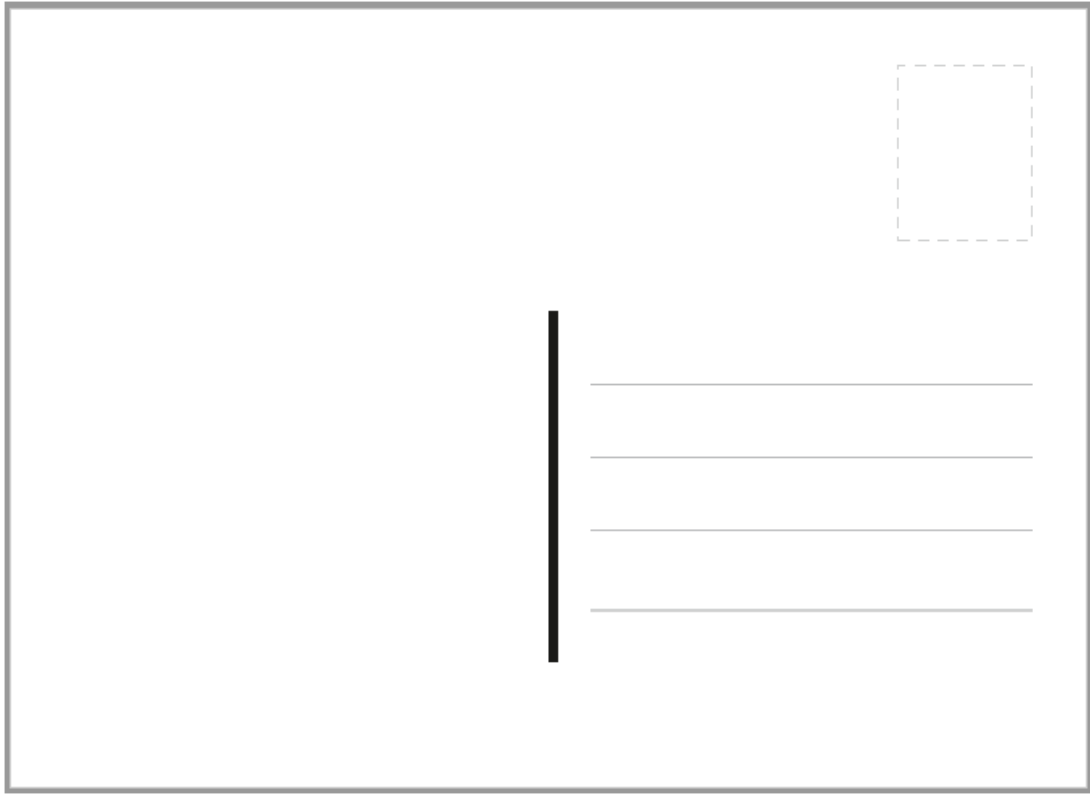
Die folgenden Beispiele für Liedpostkarten können als Vorlagen zum Ausmalen, zum Weitermalen oder zum Gestalten eigener Motive verwendet werden.

Beim doppelseitigen Kopieren der Vorlagen (S. 2 - 7) erhält man auf der Rückseite des Motivs die Seite mit dem Adressfeld.

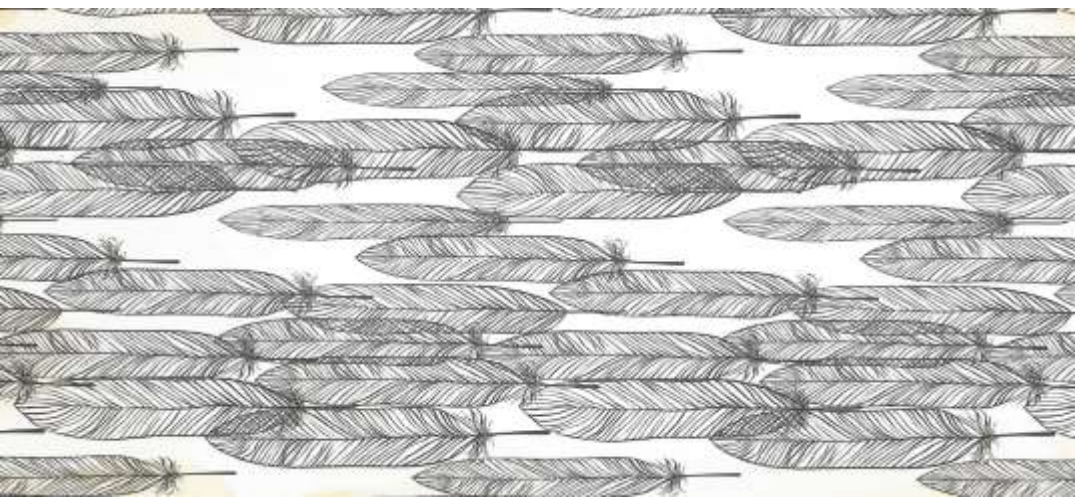
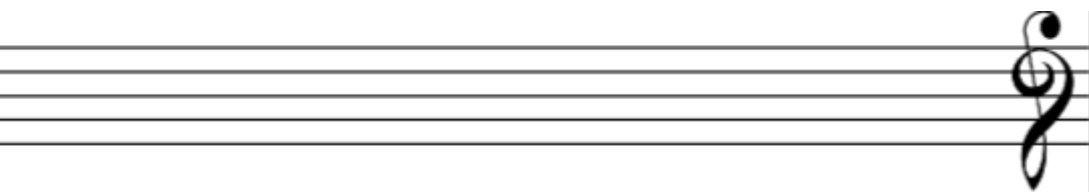




A musical staff with a treble clef. A dashed rectangular box is positioned above the staff, indicating where a note should be placed. The staff itself is empty.



A musical staff with a treble clef. A dashed rectangular box is positioned above the staff, indicating where a note should be placed. The staff itself is empty.

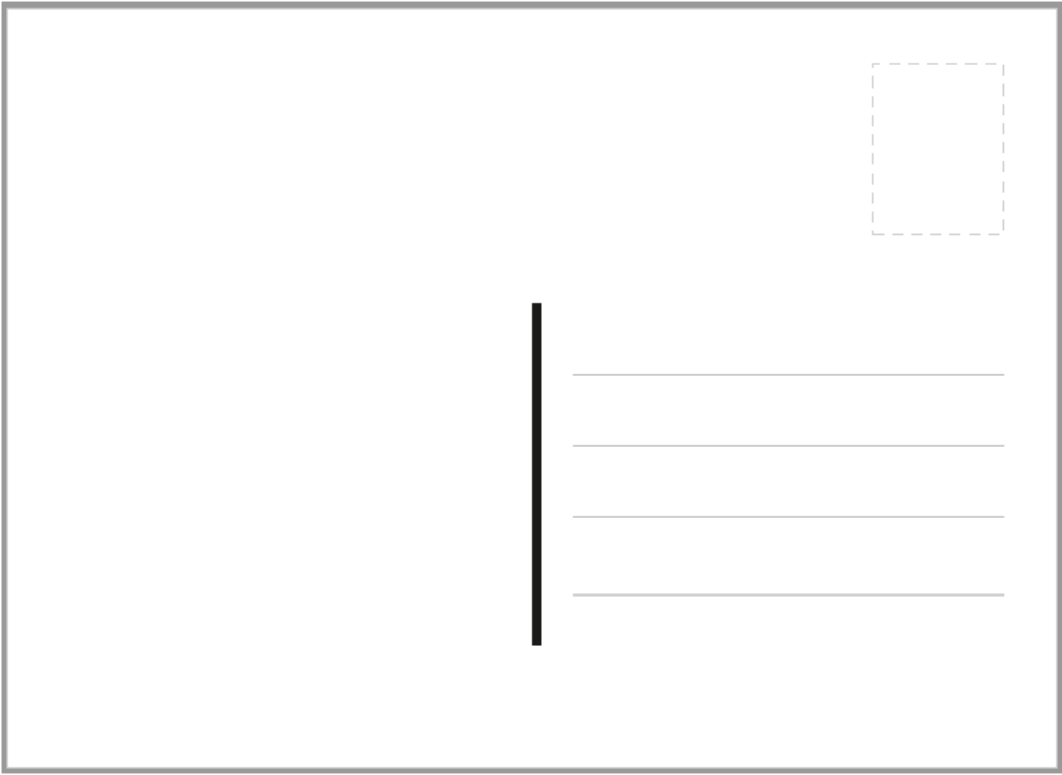


BIE NE

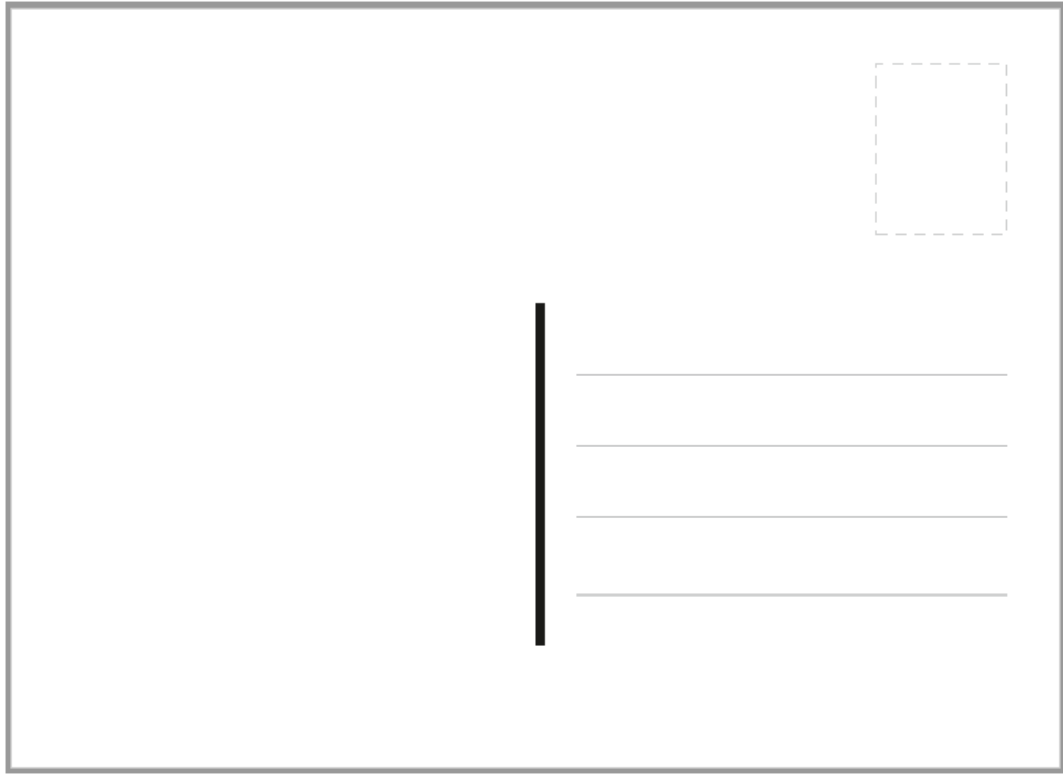


Blank card template with a vertical line on the left, four horizontal lines for writing, and a dashed rectangular box in the top right corner.

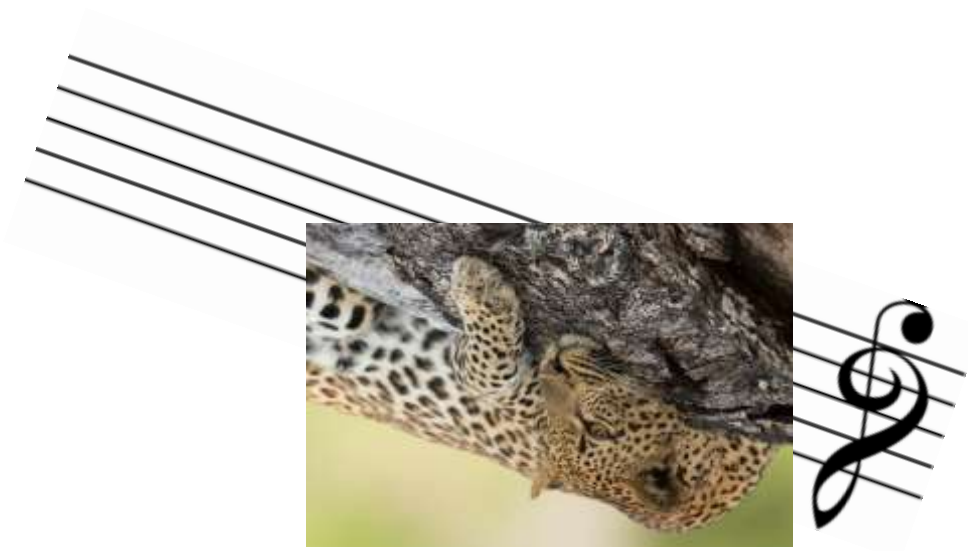
Blank card template with a vertical line on the left, four horizontal lines for writing, and a dashed rectangular box in the top right corner.



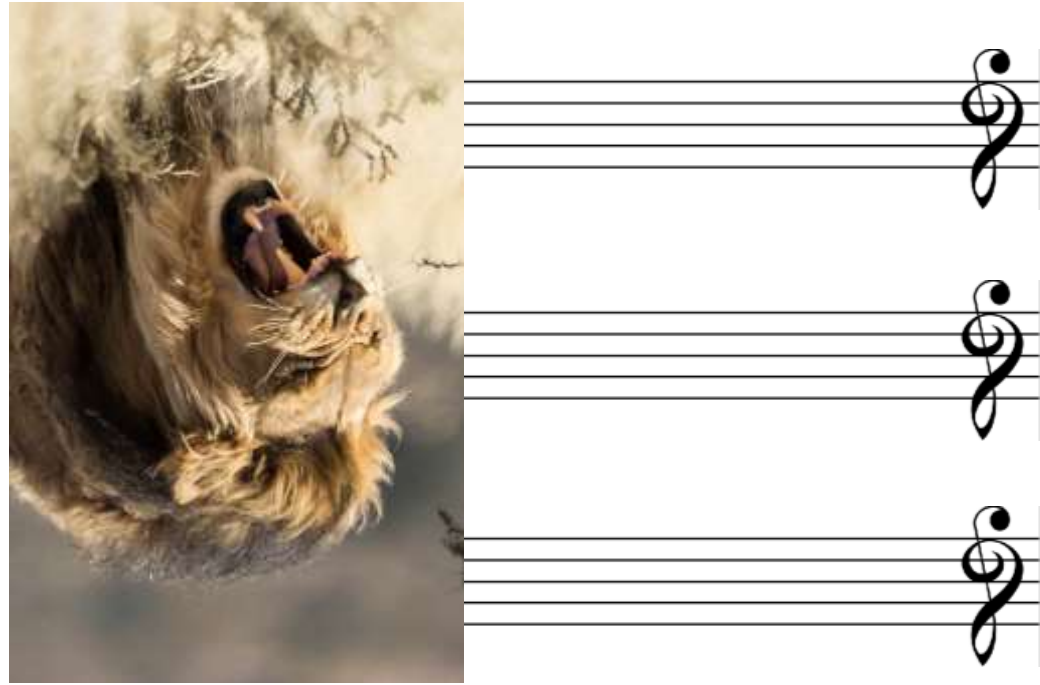
A blank musical staff with a vertical bar line on the left and four horizontal lines. A dashed rectangular box is positioned above the staff, intended for a note. The entire staff is enclosed in a thin black border.



A blank musical staff with a vertical bar line on the left and four horizontal lines. A dashed rectangular box is positioned above the staff, intended for a note. The entire staff is enclosed in a thin black border.



A photograph of a leopard and its cub clinging to a tree branch. The image is partially overlaid by a white musical staff with five horizontal lines and a treble clef on the right side.



A photograph of a sloth hanging from a branch with its mouth open. The image is partially overlaid by a white musical staff with five horizontal lines and three treble clefs on the right side.

Blank writing template with a dashed box in the top right corner and a vertical line on the left side, followed by four horizontal lines for writing.

Blank writing template with a dashed box in the top right corner and a vertical line on the left side, followed by four horizontal lines for writing.



A rectangular box containing a musical staff with four horizontal lines. A vertical bar line is positioned to the left of the staff. In the top right corner of the box, there is a dashed rectangular box.

A rectangular box containing a musical staff with four horizontal lines. A vertical bar line is positioned to the left of the staff. In the top right corner of the box, there is a dashed rectangular box.

A horizontal musical staff consisting of four parallel lines. A treble clef is attached to the right end of the staff.

A horizontal musical staff consisting of four parallel lines. A treble clef is attached to the right end of the staff.

A rectangular box with a solid black border. In the upper right corner, there is a dashed-line rectangle. On the left side, there is a thick vertical black line. To the right of this vertical line are four horizontal black lines, stacked vertically and aligned with the vertical line's extent.

A rectangular box with a solid black border. In the upper right corner, there is a dashed-line rectangle. On the left side, there is a thick vertical black line. To the right of this vertical line are four horizontal black lines, stacked vertically and aligned with the vertical line's extent.